

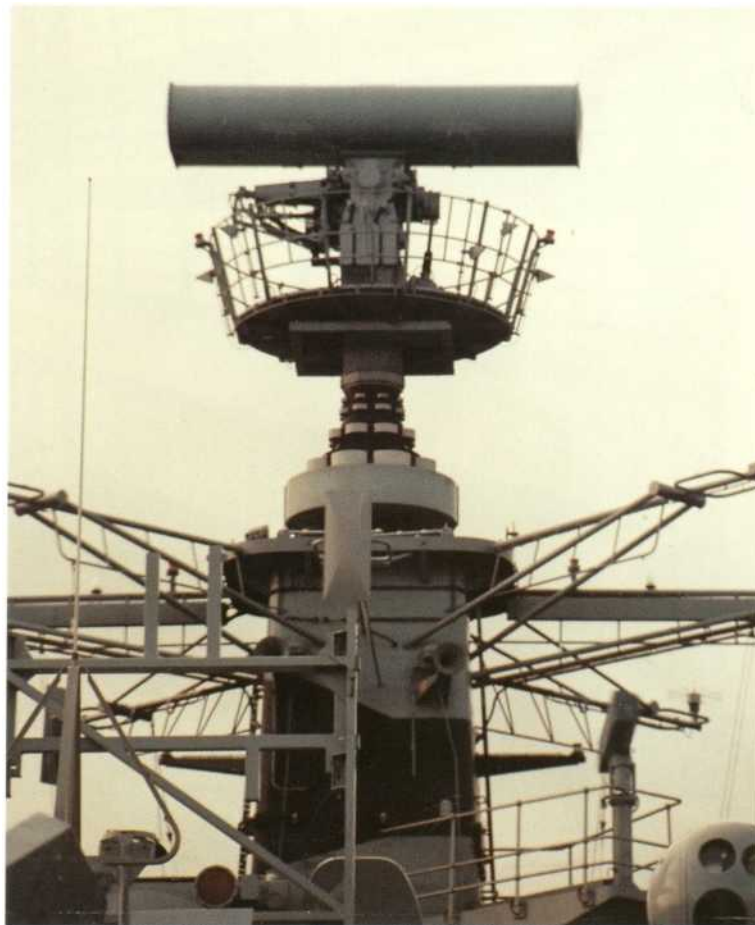


SONAR

The sonarmen operate active and passive sonars to provide a comprehensive picture of underwater activity. Modern sonars are very sophisticated, and require the operators to have a thorough understanding of the ocean environment.

*Upper deck
weapon crew.*



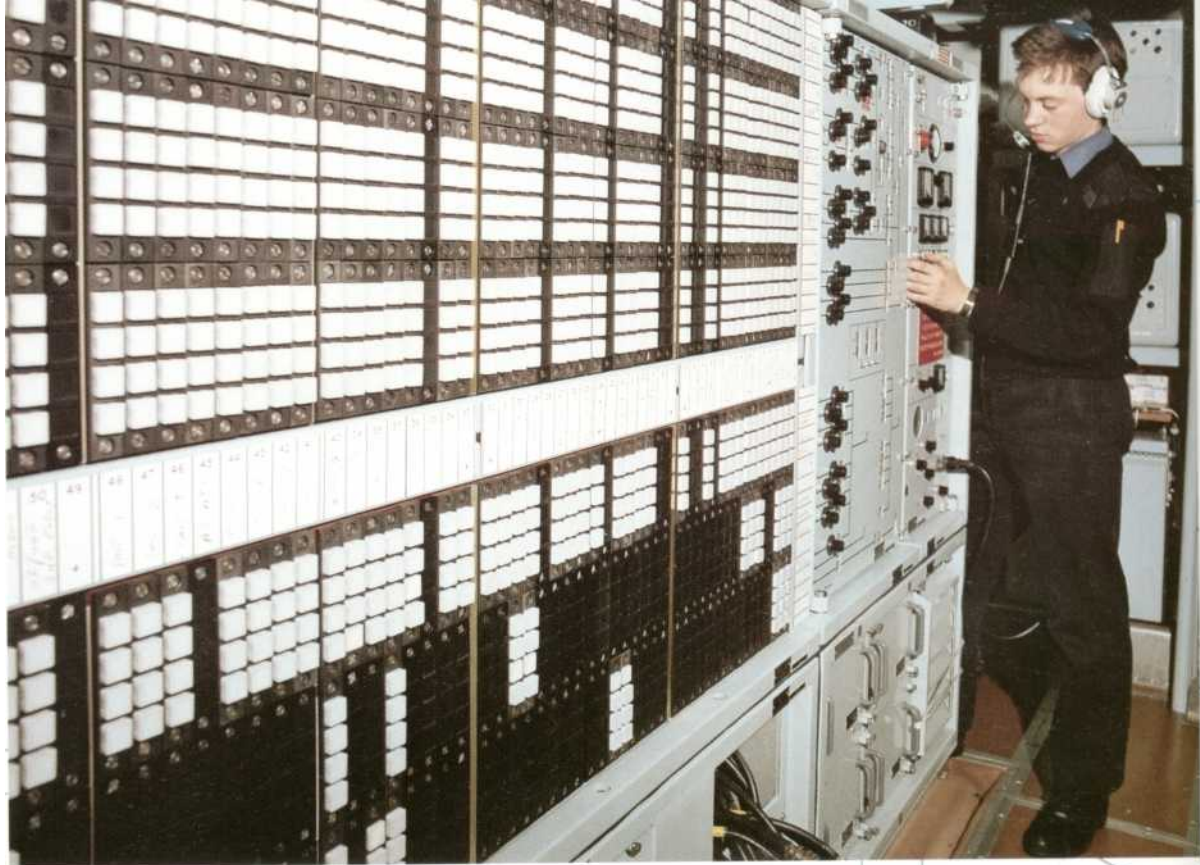


ELECTRONIC WARFARE

This sub-department is responsible for intercepting and analysing radar transmissions. Information which helps the Command to identify unknown contacts at very long ranges

MISSILE

Operation of all the ship's missiles and gun systems is the province of the missile sub-department



COMMUNICATIONS

Today's Navy requires warships to be in twenty four hour continuous contact with Fleet Headquarters. This is achieved through a great variety of radio and satellite networks all of which are controlled by the communications sub-department.



CPO (OPS) (S) Gareth PARRY, aged 30, joined the Navy in 1976. He is married with one daughter and lives in Chester. He runs the Underwater Warfare Sub-Department and the whole ship's NBCD training.

SEAMAN SPECIALISTS

The few seaman specialists provide in-depth knowledge for all seamanship evolutions. They are particularly important for Replenishment at Sea operations with tankers and supply ships.



FLIGHT

The Flight will embark with either a Lynx, Sea King or EH101 (Merlin) helicopter.



Capable of a multitude of roles, the aircraft's primary use is in the field of anti-submarine warfare. This photograph shows our flight deck in use for the first time. The helicopter is a Lynx.

The manning of the upperdeck is a whole department committment. Experience levels vary from the seaman with only a few months to the leading hand with several years time served.

PICTURED FROM LEFT TO RIGHT;
 L/S (Seaman) Paul SMITH, L/S (Radar) David WALKER,
 Seaman (Radar) Andrew BRAZIER,
 A/B (Radar) Jonathan WHITE,
 L/S (Electronic Warfare) Ian WOODSIDE,
 L/S (Missile) Philip HANDLEY, L/S (Radar) Trevor SIMMONS.



OPERATIONS DEPARTMENT

OFFICERS

LTCDR PEARSON
 LT FINNEMORE
 LT WOODS
 LT TURNER
 LT PILLAR
 LT SECRETAN
 LT GODDARD

EXECUTIVE

MAA HUDSON
 CPO (SEA) THOMPSON
 POMA BRAMPTON
 LREG TINGLE
 LPT HARDCASTLE
 LS (SEA) SMITH
 LS (SEA) HINKINSON

RADAR

CPO (OPS)(R) PERCY
 PO (R) WYLD
 PO (R) BENASSI
 PO (R) SOLOMAN
 LS (R) WILLET
 LS (R) DARCY-BURT
 LS (R) SIMMONS T S
 LS (R) SIMMONS R H
 LS (R) HORLICK
 LS (R) KENNEDY
 LS (R) WALKER
 AB (R) MCCALLUM
 AB (R) FINDLEY
 AB (R) SHEPHERD
 AB (R) ARMITAGE
 AB (R) ROBSON
 AB (R) WILLIAMS
 S (R) HAYNES
 S (R) BOWLES
 S (R) BRAZIER
 S (R) DOWNIE
 S (R) MULLI-SINGH
 S (R) GREASLEY
 S (R) DAVIES
 S (R) WOODS
 S (R) CHILCOTT

MISSILE

CPO (OPS) (M) BELL
 PO (M) NURSEY
 LS (M) DAVIES
 LS (M) HEALY
 LS (M) HANDLEY
 LS (M) HOLMES
 AB (M) BEASLEY
 AB (M) CRIBB
 AB (M) CODD
 AB (M) HARDY
 AB (M) AMNER
 AB (M) HOMER
 S (M) MCROBIE
 S (M) HEAVEN
 S (M) STAIT
 S (M) BOWDEN
 S (M) LEE
 JS (M) ROBERTS